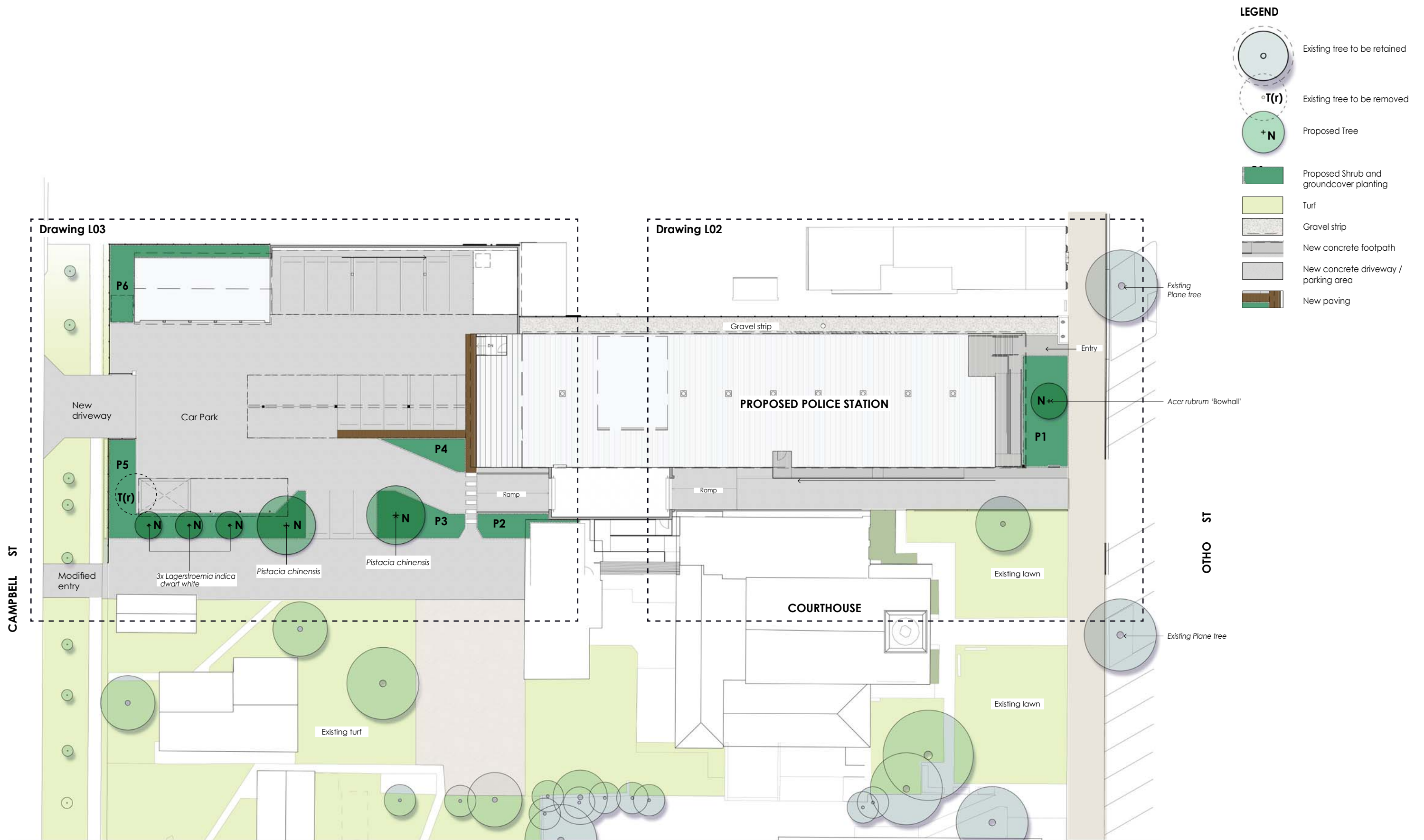


COUNCIL ASSESSMENT REPORT
DA-74/2019 - INVERELL POLICE STATION REDEVELOPMENT

ATTACHMENT 3

LANDSCAPE CONCEPT DRAWINGS

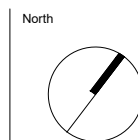




Revisions			
A	DA REVIEW	11/07/2019	NL
Issue	Description	Date	Chk Int

General Notes
Do not scale this drawing. The drawing shows design intent only. All dimensions to be checked on site prior to construction or production. Construction details to be confirmed by contractor/manufacture. This is a computer generated drawing. Do not amend by hand. Figure dimensions are to be used. Contact architect for clarification if dimensions are not clear. All dimensions are in millimeters. All discrepancies and omissions on site must be reported to the architect for their comments or approval prior to commencing work.

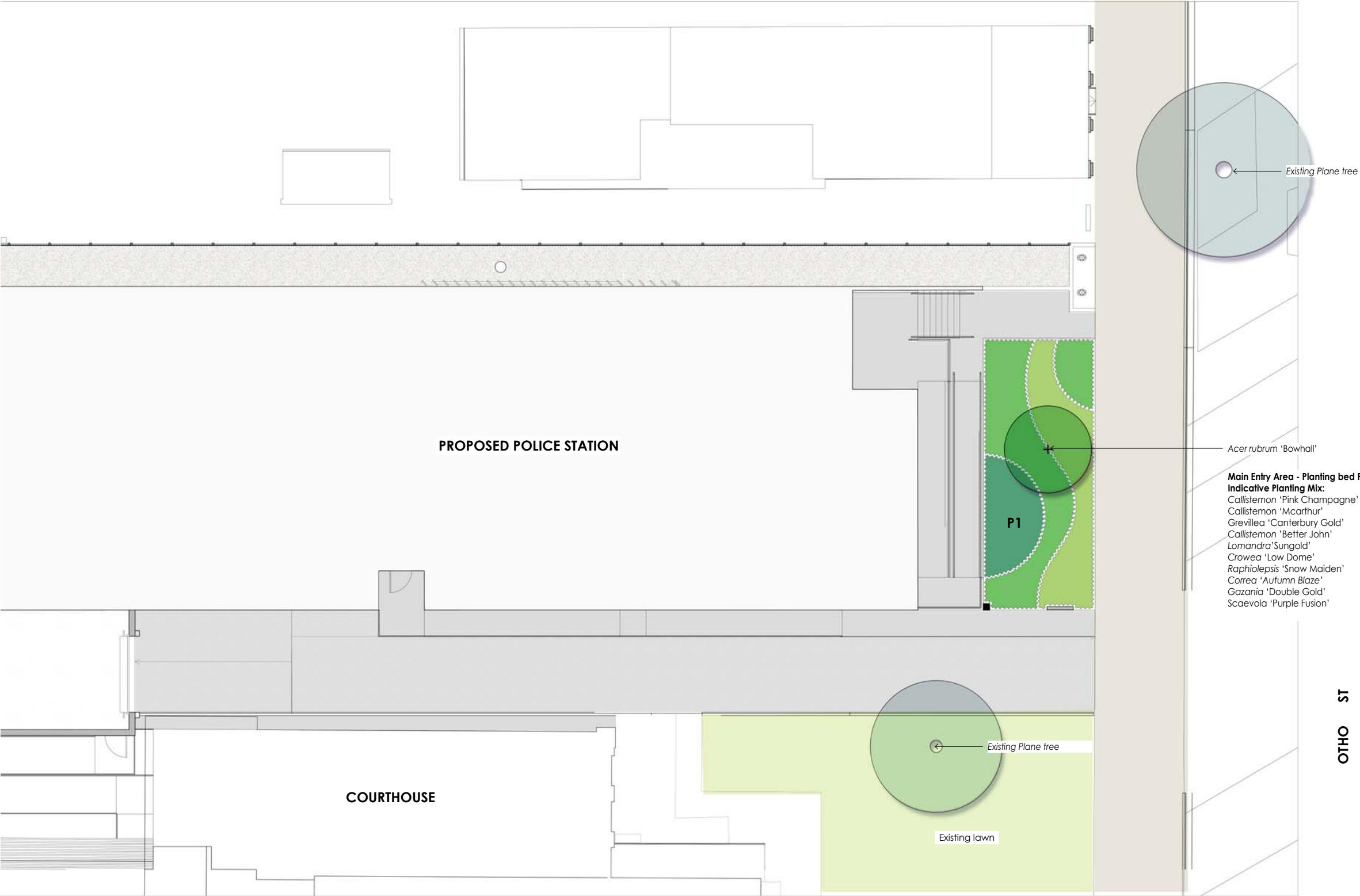
Drawing Notes



Landscape Architect
phillips marler
Suite 203
27-29 Abercrombie Street
Cherrybrook NSW 2868
Telephone 02 9696 9923
Facsimile 02 9696 9944
Email: info@phillipsmarler.com.au
www.phillipsmarler.com.au

Project
INVERELL POLICE STATION
Location
109 OTHO STREET, INVERELL

CROWN DA
NOT TO BE USED DURING CONSTRUCTION
Scale
1 : 400 @ A3
Drawing
LANDSCAPE CONCEPT PLAN
Project Number
219226
Drawing Number
L01
Issue
A



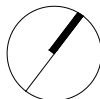
LEGEND

- Existing tree to be retained
- Existing tree to be removed
- Proposed Tree
- P1 Planting bed number
- Proposed Large Shrub/hedge and groundcover planting
- Proposed Medium Shrub and groundcover planting
- Proposed Low Shrub, sedges and groundcover planting
- Turf
- Gravel strip
- New concrete footpath
- New concrete driveway / parking area
- New paving

Revisions			General Notes		
A DA REVIEW			Do not scale this drawing. The drawing shows design intent only. All dimensions to be checked on site prior to construction or production. Construction details to be confirmed by contractor/manufacture. This is a computer generated drawing. Do not amend by hand. Figure dimensions are to be used. Contact architect for clarification if dimensions are not clear. All dimensions are in millimeters. All discrepancies and omissions on site must be reported to the architect for their comments or approval prior to commencing work.		
Issue	Description	Date	Chk	Int	

Drawing Notes

North



Landscape Architect
phillipsmarler
PHILLIPSMARLER
ABN 42 953 472 187
Non-Architects
D. Phillip Marler
No. 4541
Suite 203
25-28 Abercrombie Street
Chippendale NSW 2008
Locked Bag 18/164
Newtown NSW 2042
Telephone 02 9616 9933
Facsimile 02 9616 9144
mail@phillipsmarler.com.au
www.phillipsmarler.com.au

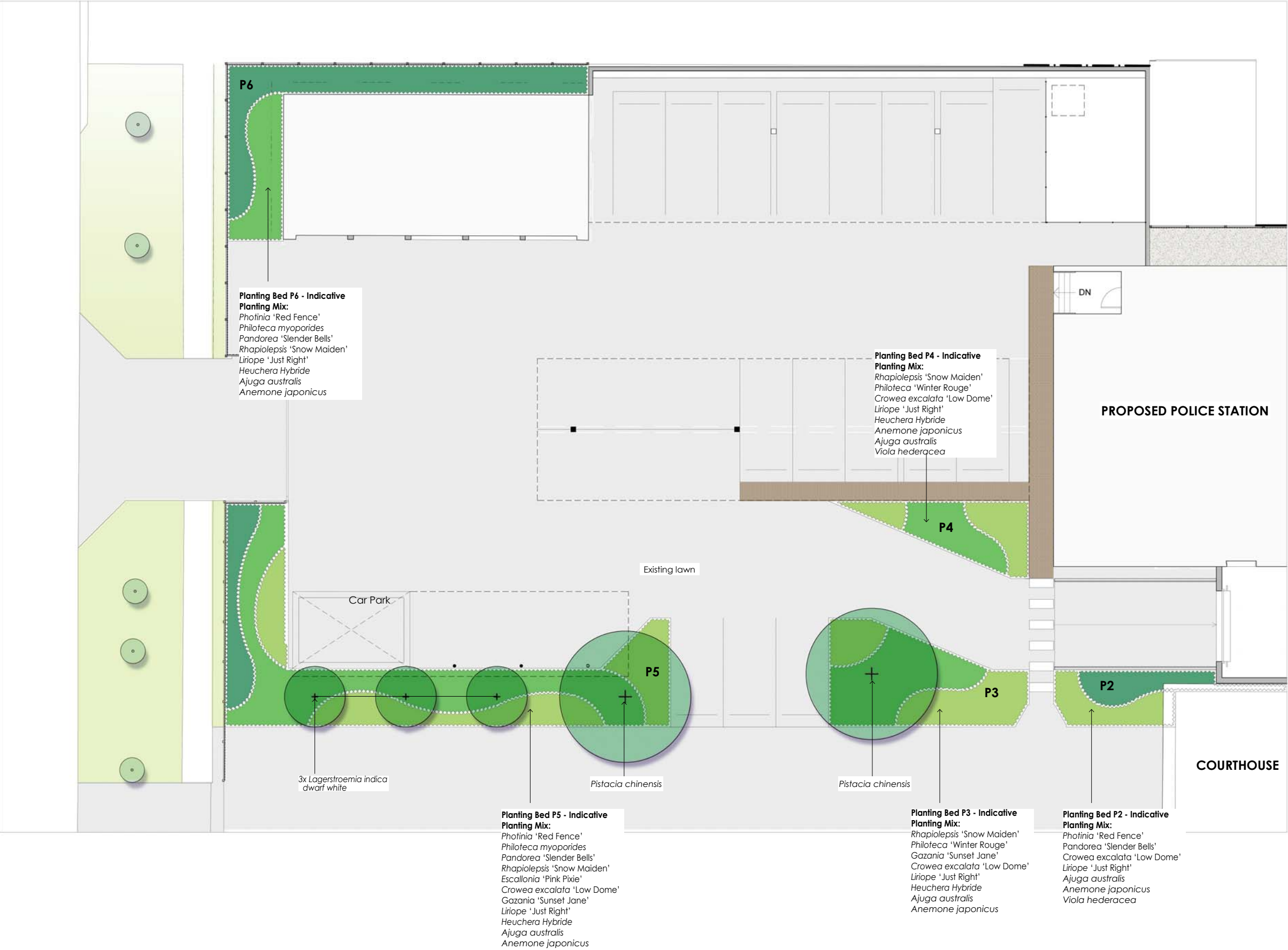
Project
INVERELL POLICE STATION
Location
109 OTHO STREET, INVERELL

CROWN DA
NOT TO BE USED DURING
CONSTRUCTION

Scale
1 : 200 @ A3

Drawing
LANDSCAPE DETAIL PLAN 1

Project Number	Drawing Number	Issue
219226	L02	A

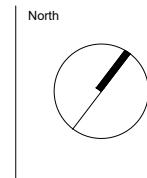


Revisions	
A	DA REVIEW
Issue	Description

11/07/2019	NL
Date	Chk Int

General Notes
Do not scale this drawing. The drawing shows design intent only. All dimensions to be checked on site prior to construction or production. Construction details to be confirmed by contractor/manufacturer. This is a computer generated drawing. Do not amend by hand. Figure dimensions are to be used. Contact architect for clarification if dimensions are not clear. All dimensions are in millimeters. All discrepancies and omissions on site must be reported to the architect for their comments or approval prior to commencing work.

Drawing Notes



Landscape Architect
phillipsmarler
Suite 203
27-29 Abercrombie Street
Chippendale NSW 2008
Locked Bag 187164
Newtown NSW 2062
Telephone 02 9696 9933
Facsimile 02 9696 9944
Email phillipsmarler.com.au
www.phillipsmarler.com.au

Project
INVERELL POLICE STATION
Location
109 OTHO STREET, INVERELL

CROWN DA
NOT TO BE USED DURING
CONSTRUCTION

Scale
1 : 200 @ A3

Drawing
LANDSCAPE DETAIL PLAN 2

Project Number	Drawing Number	Issue
219226	L03	A

Trees



Acer rubrum 'Bowhall'



Pistacia chinensis



Lagerstroemia indica - white

Shrubs



Callistemon viminalis 'LC01' - 'PBR Macarthur'



Photinia x fraseri 'CP01' PBR - Red Fence



Philoteca myoporoides



Callistemon 'Pink Champagne'



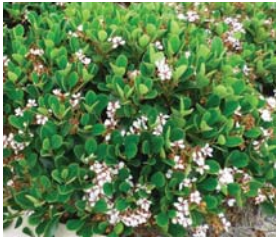
Grevillea 'Canterbury Gold'

Indicative Plant Schedule

Botanical Name	Common Name	Mature Size
Trees		H x W
<i>Acer rubrum</i> 'Bowhall'	Bowhall Red Maple	10 x 5m
<i>Pistacia chinensis</i>	Chinese Pistache	8 x 6m
<i>Lagerstroemia</i> 'Zuni'	Crepe Myrtle	4 x 3m
Shrubs		
<i>Callistemon viminalis</i> 'LJ1' PBR - 'Better John'	Bottlebrush	1.2 x 1m
<i>Callistemon viminalis</i> 'LC01' PBR - 'Macarthur'	Bottlebrush	1.8 x 1.5m
<i>Callistemon</i> 'Pink Champagne'	Bottlebrush	to 3m x 1.5m
<i>Correa pulchella</i> 'Autumn Blaze'	Small Crowea	0.3 x 1.5m
<i>Crowea exalata</i> 'Low Dome'	Waxflower	0.4 x 0.7m
<i>Escallonia hybride</i> 'Pink Pixie'	Pink Pixie	0.8 x 0.8m
<i>Grevillea hybride</i> 'Canterbury Gold'	Grevillea Canterbury Gold	1.5 x 2m
<i>Grevillea rosemarinifolia</i> 'H16' PBR - 'Crimson Villea'	Grevillea 'Crimson Villea'	0.8 x 0.8m
<i>Photinia</i> 'Red Fence'	Red Fence Photinia	to 2m x 1m
<i>Philoteca myoporoides</i>	Native Wax Flower	1.5 x 1.5m
<i>Philoteca myoporoides</i> 'Winter Rouge'	Wax Flower	0.8 x 0.8m
<i>Rhaphiolepis</i> 'Snow Maiden'	Indian Hawthorn 'Snow Maiden'	1m x 0.5m
Groundcovers, Sedges & Climbers		
<i>Ajuga australis</i>	Australian Bugle	0.3m x 1m
<i>Anemone hupehensis japonica</i> - white	Japanese Anemone	to 1.2 x 0.4m
<i>Gazania hybrid</i> 'GT20' PBR - 'Double Gold'	Gazania 'Double Gold'	0.2 x 0.6m
<i>Gazania hybrid</i> 'Sunset Jane'	Gazania 'Sunset Jane'	0.3 x 0.4m
<i>Heuchera</i> Hybrids	Coral Bells	0.6 x 0.3m
<i>Liriope muscari</i> 'LIRJ' PBR - 'Just Right'	Lily turf	0.5 x 0.5m
<i>Lomandra longifolia</i> 'LMV100' PBR - 'Sungold'	Mat Rush 'Sungold'	0.6 x 0.6m
<i>Pandorea jasminoides</i> 'PJ01' PBR - 'Slender Bells White'	Pandorea 'Slender Bells White'	climber
<i>Scaevola humilis</i> 'PFS100' PBR - 'Purple Fusion'	Fan Flower 'Purple Fusion'	0.2 x 1.5m
<i>Viola hederacea</i>	Native Violet	0.15m x 1-2m



Callistemon Better John - Callistemon viminalis 'LJ1' PBR



Rahipolepis 'Snow Maiden'



Crowea exalata 'Low Dome'



Correa 'Autumn Blaze'



Escallonia 'Pink Pixie'



Grevillea 'Crimson Villea'

Groundcovers, sedges & perennials



Double Gold - Gazania hybrid 'GT20' PBR



Gazania 'Sunset Jane'



Slender Bells White - Pandorea jasminoides 'PJ01' PBR



Sungold - Lomandra longifolia 'LMV100' PBR



Purple Fusion Scaevola humilis 'PFS100' PBR



Just Right Liriope muscari 'LIRJ' PBR



Ajuga australis



Anemone hupehensis japonica - white



Heuchera Hybride

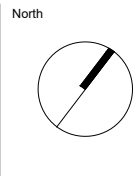


Viola hederacea

Revisions			
A	DA REVIEW	11/07/2019	NL
Issue	Description	Date	Chk Int

General Notes
Do not scale this drawing. The drawing shows design intent only. All dimensions to be checked on site prior to construction or production. Construction details to be confirmed by contractor/manufacturer. This is a computer generated drawing. Do not amend by hand. Figure dimensions are to be used. Contact architect for clarification if dimensions are not clear. All dimensions are in millimeters. All discrepancies and omissions on site must be reported to the architect for their comments or approval prior to commencing work.

Drawing Notes



Landscape Architect
phillipsmarler
Suite 203
27-29 Abercrombie Street
Chippendale NSW 2008
Locked Bag 18744
Newtown NSW 2062
Telephone 02 9696 9933
Facsimile 02 9696 5944
mail@phillipsmarler.com.au
www.phillipsmarler.com.au

Project
INVERELL POLICE STATION
Location
109 OTHO STREET, INVERELL

CROWN DA
NOT TO BE USED DURING
CONSTRUCTION

Scale
NTS @ A3

Drawing
INDICATIVE PLANTING

Project Number
219226

Drawing Number
L04

Issue
A